



**hrt**  
herbert r thomas

40 Jersey Quay  
Aberavon,  
Port Talbot,  
Neath Port Talbot  
SA12 6QN

[hrt.uk.com](http://hrt.uk.com)



## 40 Jersey Quay

Offers In Excess Of **£175,000**

Boasting enviable sea and promenade views to the front, with direct access off the living area onto a private balcony, is this stylish and beautifully presented two bedroom beach front apartment.

Fully refurbished beach front apartment

First storey accommodation with private balcony

Available to purchase with no ongoing chain

Positioned within a quiet residential complex close to an abundance of local amenities

Convenient commuter access to the M4 motorway and Port Talbot mainline train station

Spacious open plan kitchen/dining/living area plus two double bedrooms

Enviably sea views with an ever-changing outlook

Stylish interior with all new fixtures

Very well maintained communal areas

Allocated off road parking for one car









The property is situated within a purpose built apartment block on the first floor. Upon entering the apartment, a wide central hallway provides access to all the living, bedroom and bathroom accommodation. The hallway features newly fitted carpet flooring, with a glass block window to the side, allowing natural light from the living area into the space.

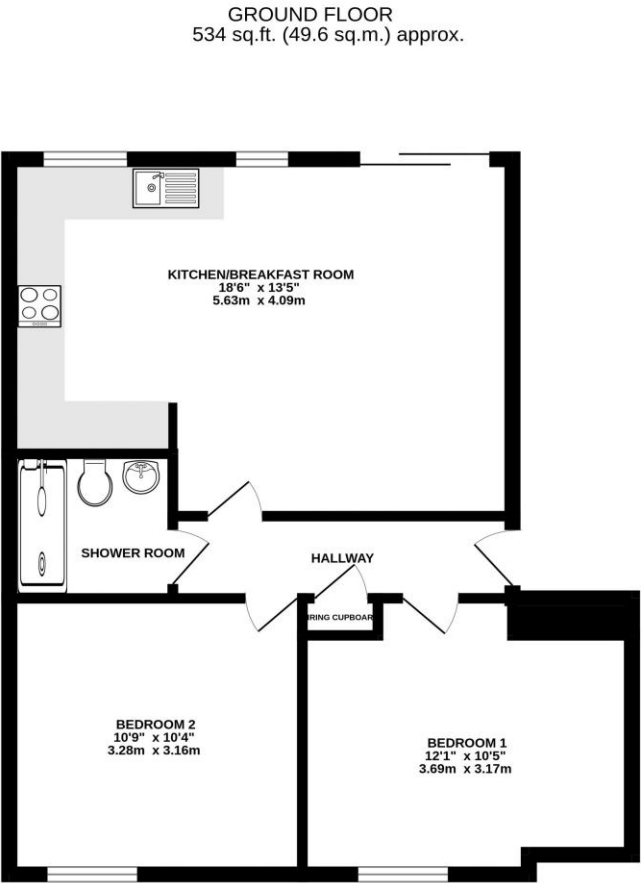
The impressive open plan living, dining and kitchen area is flooded with natural light from a set of UPVC double glazed sliding patio doors to the front, with two further UPVC double glazed windows within the kitchen and dining areas. The

room features luxury cushion flooring throughout the shared space and benefits from recessed ceiling spotlights. The kitchen has been newly upgraded and now features a contemporary range of high gloss fitted base and wall mounted units, with integrated appliances to include; dishwasher, washer / dryer and an electric oven with four burner induction hob. There is a ceramic sink unit positioned below the front window and space has been created to fit a large American style fridge/freezer.

The two double bedrooms have been freshly redecorated and now offer newly fitted carpet flooring. Both of the bedrooms benefit from a UPVC double glazed window to the rear, feature recessed ceiling spotlights and share the use of the stylish fitted shower room.

The shower room has been fitted with a modern white three piece suite to include; double shower cubicle with a mains fitted shower and rainfall showerhead, pedestal wash hand basin and low level WC. The room also features luxury cushion flooring, respatex panelling to all wet areas, recessed ceiling spotlights and a wall mounted chrome heated towel rail.

The apartment complex is positioned in a development of similar styled units and houses. It comes with an allocated parking bay for one car and provides direct access to the popular Aberavon promenade.



TOTAL FLOOR AREA: 534 sq.ft. (49.6 sq.m.) approx.  
Whilst every attempt has been made to ensure the accuracy of the floorplan contained here, measurements of doors, windows, rooms and any other items are approximate and no responsibility is taken for any error, omission or misstatement. This plan is for illustrative purposes only and should be used as such by any prospective purchaser. The services, systems and appliances shown have not been tested and no guarantee as to their operability or efficiency can be given.  
Made with Metropix ©2025





## Directions

Sat Nav: SA12 6QN

## Tenure

Leasehold

## Services

Ground Rent: £125 Per Annum  
 Service Charge: £2243.22 Per Annum  
 Water - Electric - Gas - Drainage  
 Council Tax Band C  
 EPC Rating B

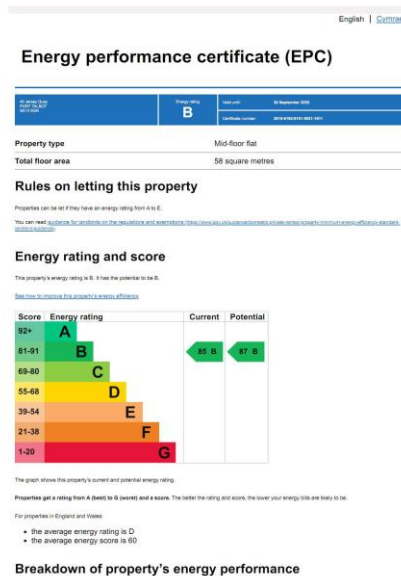
Viewing strictly by  
 appointment through  
 Herbert R Thomas

[hrt.uk.com](http://hrt.uk.com)

**hrt**  
 herbert r thomas

33 Alfred Street, Neath, West Glamorgan,  
 SA11 1EH,  
 01639 639541  
[neath@hrt.uk.com](mailto:neath@hrt.uk.com)

**hrt** Est. 1926



These particulars are believed to be accurate but they are not guaranteed to be so. They are intended only as a general guide and cannot be construed as any form of contract, warranty or offer. The details are issued on the strict understanding that any negotiations in respect of the property named herein are conducted through Herbert R. Thomas.



